

# TOITURES VEGETALISEES

EN ALUMINIUM



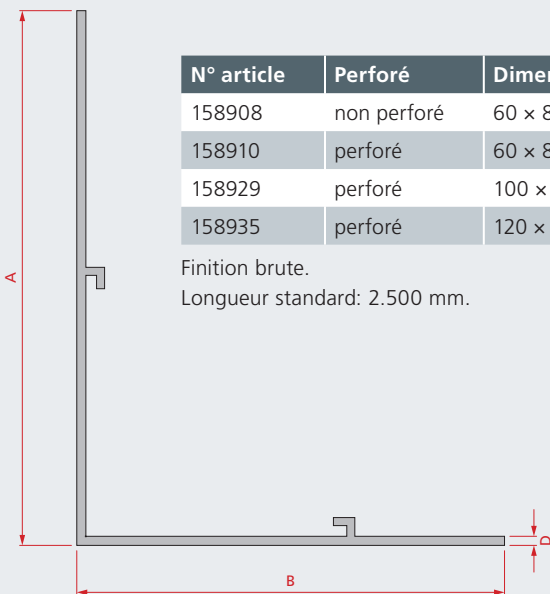
## PROFIL GARDE GRAVIER



Non perforé



Perforé



N° article	Perforé	Dimensions
158908	non perforé	60 × 80 × 1,5 mm
158910	perforé	60 × 80 × 1,5 mm
158929	perforé	100 × 80 × 1,7 mm
158935	perforé	120 × 100 × 2 mm

Finition brute.  
Longueur standard: 2.500 mm.

## PROFIL GARDE GRAVIER FLEXIBLE



N° article	Perforé	Dimensions
158927	perforé	80 × 60 × 1,5 mm

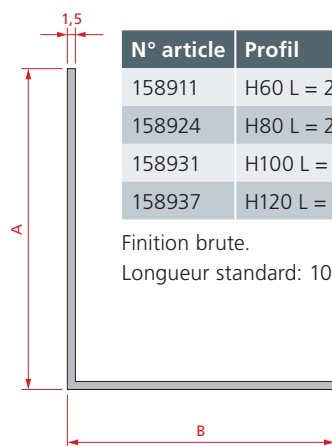
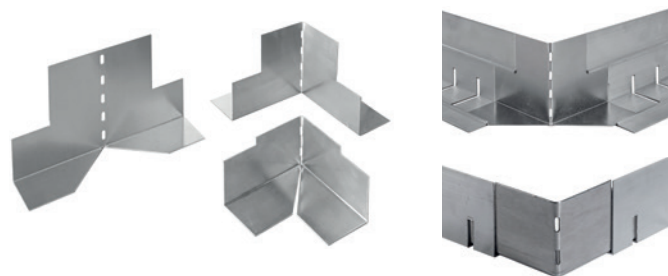
Finition brute.  
Longueur standard: 2.500 mm.



## ANGLE INTÉRIEUR OU EXTÉRIEUR

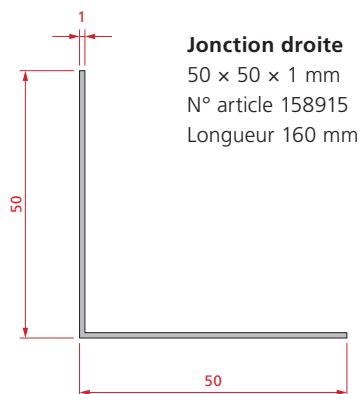
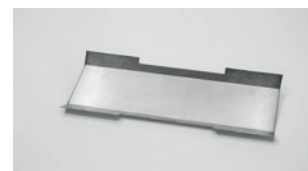
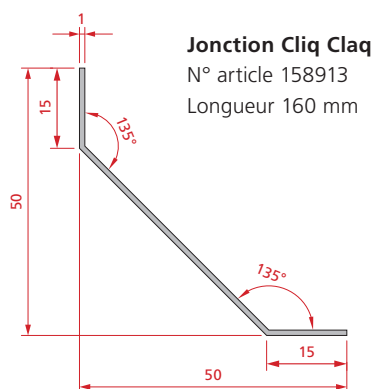
N° article	Profil	Dimensions
158911	H60 L = 200 mm	60 × 80 × 1,5 mm
158924	H80 L = 200 mm	80 × 60 × 1,5 mm
158931	H100 L = 200 mm	100 × 80 × 1,5 mm
158937	H120 L = 200 mm	120 × 100 × 1,5 mm

Finition brute.  
Longueur standard: 100 × 100 mm

## PIÈCES DE JONCTION

Finition brute.

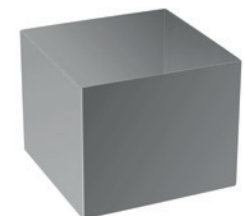
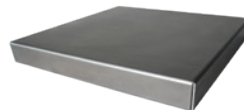


## CHAMBRES DE VISITE EN ALUMINIUM

Finition brute.



N° article	Partie	L × B × H (mm)
158950	pièce de base	300 × 300 × 80
158949	pièce de base perforée	300 × 300 × 80
158951	couvercle	300 × 300 × 50
158953	manchon de rehausse 150	300 × 300 × 150
158956	manchon de rehausse 300	300 × 300 × 300
158958	manchon de rehausse 500	300 × 300 × 500



Roval Aluminium BV  
(Siège social)  
Maïsdijk 7 (☎ 9102)  
Postbus 145  
5700 AC HELMOND  
PAYS-BAS  
t (+31) (0)492 56 10 50  
www.roval.eu

Roval Aluminium BELGIQUE  
Oude Liersebaan 266  
B-2570 DUFFEL  
BELGIQUE  
t (+32) (0)15 30 87 00  
www.roval.be

Roval Aluminium FRANCE  
1, Rue Victor Cousin, 77127  
Lieuxaint, France  
t (+33) (0)1 64 13 85 97  
info@rovalaluminium.fr  
www.rovalaluminium.fr

